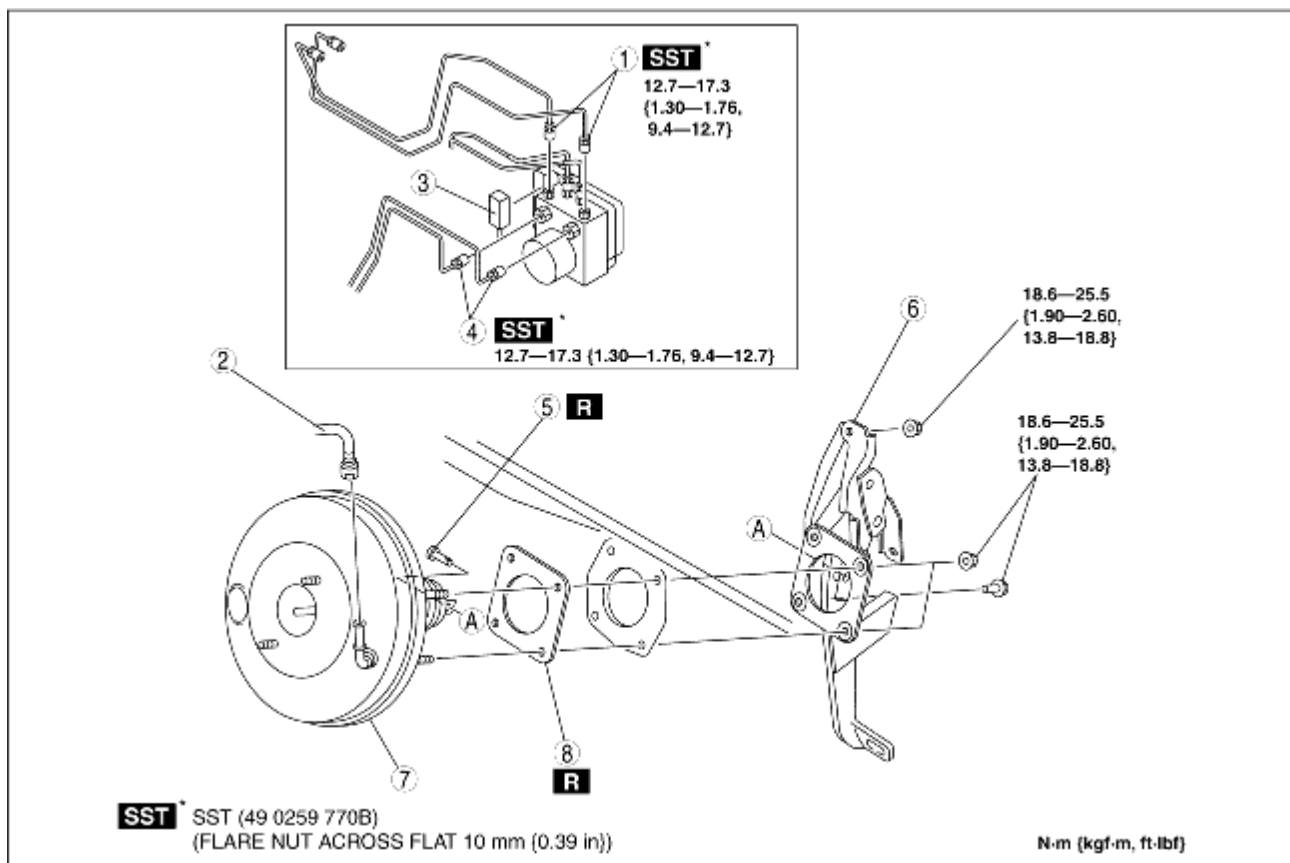


POWER BRAKE UNIT REMOVAL/INSTALLATION (L.H.D.)

B3E041143800W04

1. Remove the battery and battery tray. (See [BATTERY REMOVAL/INSTALLATION \[ZJ, Z6\]](#).) (See [BATTERY REMOVAL/INSTALLATION \[LF\]](#).)
2. Remove the master cylinder. (See [MASTER CYLINDER REMOVAL/INSTALLATION](#).)
3. Remove the brake switch connector.
4. Remove the accelerator pedal. (See [BRAKE PEDAL REMOVAL/INSTALLATION](#).)
5. Remove in the order indicated in the table.
6. Install in the reverse order of removal.
7. Inspect the brake pedal. (See [BRAKE PEDAL INSPECTION](#).)
8. Adjust the accelerator cable. (See [ACCELERATOR CABLE INSPECTION/ADJUSTMENT \[ZJ, Z6\]](#).) (See [ACCELERATOR CABLE INSPECTION/ADJUSTMENT \[LF\]](#).)



B3E0411W041

1	Brake pipe
2	Vacuum hose (See VACUUM HOSE REMOVAL/INSTALLATION .)

3	Connector (See Connector Removal Note.)
4	Brake pipe
5	Joint pin (See BRAKE PEDAL REMOVAL/INSTALLATION.)
6	Brake pedal component (See Brake Pedal Component Removal Note.)
7	Power brake unit
8	Gasket

Brake Pedal Component Removal Note

1. Remove the brake pedal installation bolt and nuts.
2. Move the power brake unit toward the vehicle rear.
3. Remove the brake pedal component.